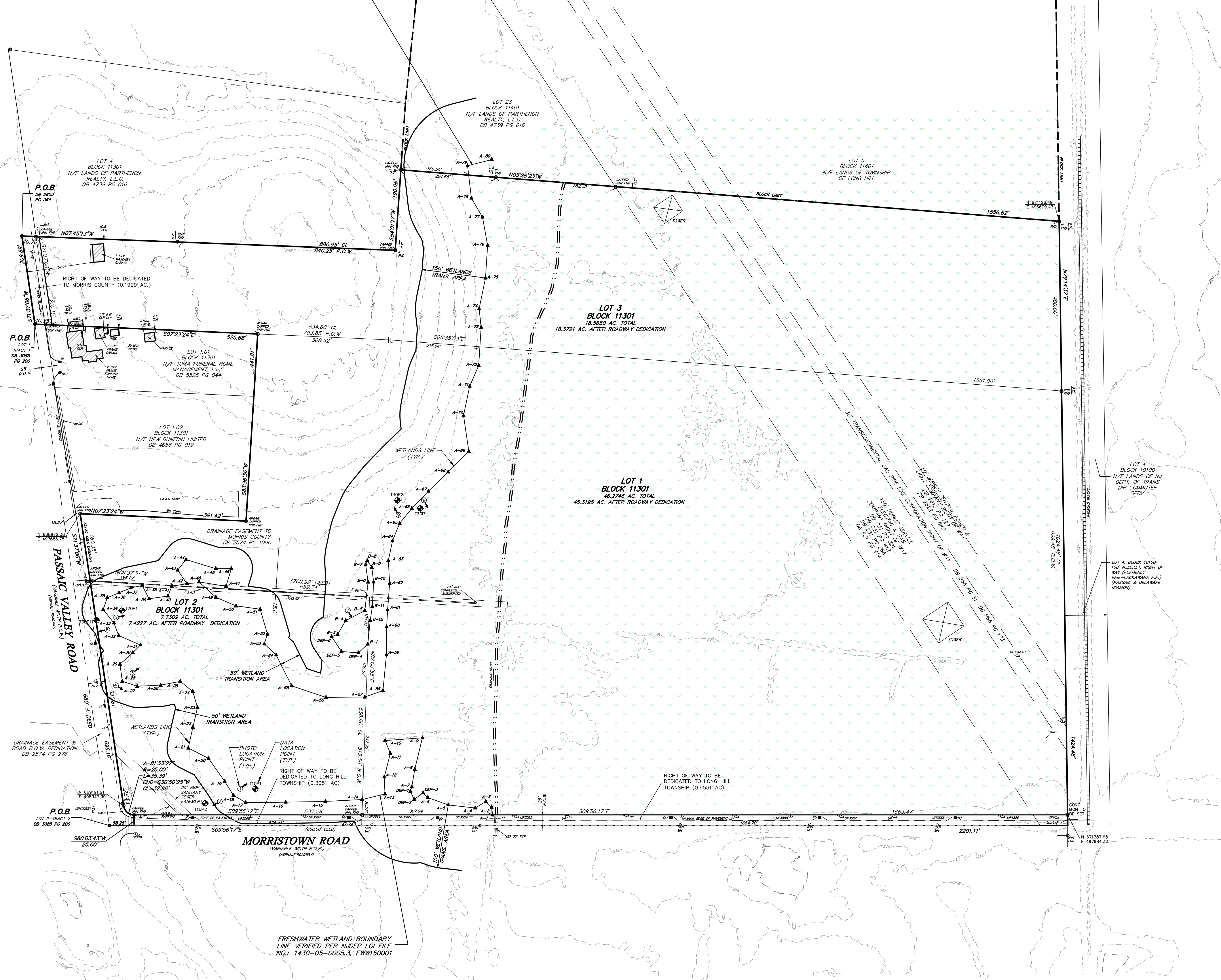
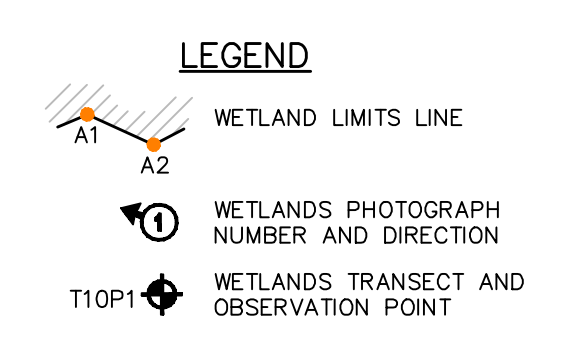


FRESHWATER WETLAND BOUNDARY LINE VERIFIED PER NJDEP LOI FILE NO.: 1430-05-0005.3, FWW50001



- GENERAL NOTES:
1. WETLANDS LINE DELINEATED BY ENVIRONMENTAL TECHNOLOGY, INC. NOVEMBER 2014, AND FIELD LOCATED BY DPW CONSULTING ON DECEMBER 5, 12, & 14, 2014.
 2. WETLANDS LINE VERIFIED BY NJDEP FRESHWATER WETLANDS LETTER OF INTERPRETATION/LINE VERIFICATION FILE NO.: 1430-05-0005.3, FWW50001.
 3. SITE IMPROVEMENTS SHOWN ARE AS PER REF #1 & #2.
 4. THE CONTOUR DATA ON THIS MAP WAS DEVELOPED USING THE MORRIS COUNTY GEOGRAPHIC INFORMATION SYSTEM DIGITAL DATA, BUT THIS SECONDARY PRODUCT HAS NOT BEEN VERIFIED BY MORRIS COUNTY AND IS NOT COUNTY-AUTHORIZED.

- MAP REFERENCES:
1. MAP ENTITLED "CENTRAL PARK MAP LOT 3 BLOCK 11301 LONG HILL TOWNSHIP MORRIS COUNTY, NEW JERSEY" PREPARED BY FERRIERO ENGINEERING, INC., DATED NOVEMBER 15, 2013.
 2. MAP ENTITLED "BOUNDARY SURVEY LOTS 1, 2, 3, BLOCK 11301, LONG HILL TOWNSHIP, MORRIS COUNTY, NEW JERSEY" PREPARED BY FERRIERO ENGINEERING, INC., DATED JULY 25, 2013.
 3. MAP ENTITLED "WETLANDS LOCATION MAP LOTS 1, 2, 3, BLOCK 11301, LONG HILL TOWNSHIP, MORRIS COUNTY, NEW JERSEY" PREPARED BY FERRIERO ENGINEERING, INC., DATED DECEMBER 22, 2014, REVISED THROUGH APRIL 16, 2015.

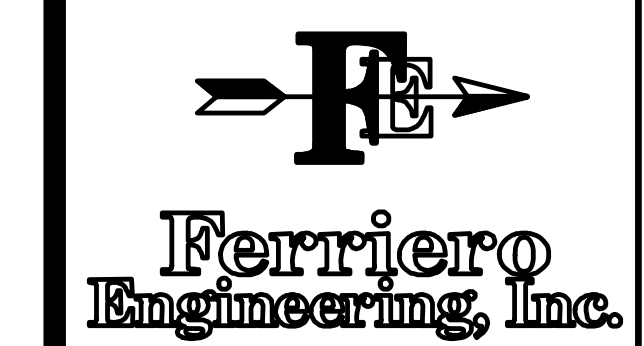


| NO. | DATE | REVISION |
|-----|------|----------|
| | | |
| | | |
| | | |
| | | |
| | | |

DRAWN BY: SCALE: FIELD BOOK
JSK 1" = 100'

CHECKED BY: FILE:
PWF 13LH109\13LH109_BASEMAP-CENTRAL

Paul W. Ferriero
PAUL W. FERRIERO
 N.J. PROFESSIONAL ENGINEER
 NO. **GE-32978**



180 MAIN STREET P.O. BOX 571
 CHESTER, NEW JERSEY 07930
 908-879-6209
 CERTIFICATE OF AUTHORIZATION 246A27935400

**WETLANDS
 TRANSITION
 AREA PLAN**

LOTS 1, 2, & 3
 BLOCK 11301
 LONG HILL TOWNSHIP
 MORRIS COUNTY
 NEW JERSEY

